

MILBANK

SOUTH 5TH STREET RECONSTRUCTION PHASE 1

Presented by Banner Associates | April 11th, 2024

INTRODUCTION | YOUR ENGINEERS



Paul Kraft, PE



Pat Carey, PE



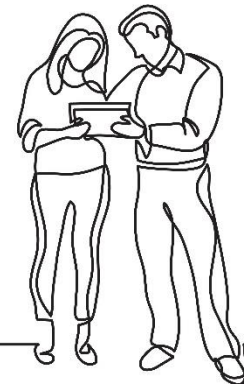
ENGINEERING A BETTER COMMUNITY

Thinkers. Problem Solvers. Innovators.

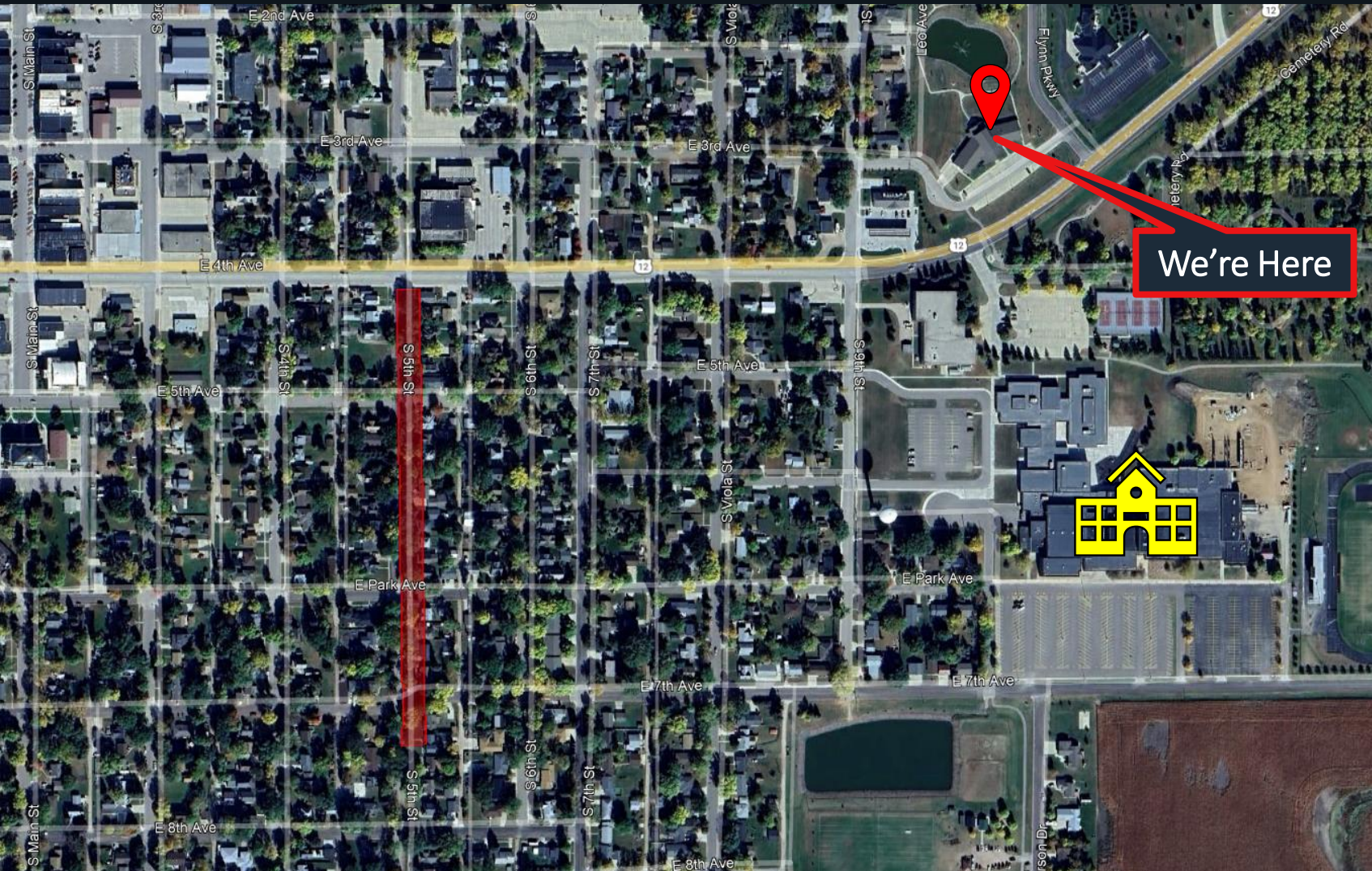
We exist to provide comprehensive engineering, environmental, and surveying services to communities throughout the upper Midwest.

You can count on us to engineer a better community.

#engineeringabettercommunity



PROJECT OVERVIEW



ANTICIPATED TIMELINE

- **CONSTRUCTION BEGINNING**
 - **MAY/JUNE 2024**
- **FINAL PAVING AND SURFACING**
 - **OCTOBER 2024 (AT LATEST)**
- **FINAL GRASS SEEDING**
 - **SPRING 2025 (AT LATEST)**

WHAT IS BEING RECONSTRUCTED?



WHAT IS BEING RECONSTRUCTED? - SANITARY SEWER

- Existing sewer is clay and allows groundwater into the pipe
- New 8" PVC sanitary sewer in the middle of the street
 - Where possible, lowered and/or steepened pipe to lessen chances of clogs and backups
- New PVC sewer services from the main in the road to the boulevard



WHAT IS BEING RECONSTRUCTED? - MUNICIPAL WATER

- New 6" PVC watermain located about 3' from the new curb and gutter
- Replacement of existing fire hydrants and valves
- New 1" water service lines from main in the road to the boulevard
 - New shutoff valve (curb stop) to be installed in the boulevard



WHAT IS BEING RECONSTRUCTED? - STORM SEWER

- Upsizing existing storm sewer from Park to 5th Street
- Maximize the amount of stormwater underground instead of in the road
- New stormwater inlets



WHAT IS BEING RECONSTRUCTED? - SURFACING



Right-of-Way (ROW)
City Property

New Curb
and Gutter

All Boulevards to
be Regraded and
Reseeded

New Driveway
Approaches

New Asphalt
Street Section

New 5' Wide
Sidewalk

WHAT IS BEING RECONSTRUCTED? - CURB & GUTTER

Replacement of all curb and gutter- WHY?

1) Drainage

- Lower the streets as needed to try to keep water in the streets and out of yards
- Make sure streets can move water (minimize flat areas)

2) Americans with Disabilities Act (ADA)

- Federal Requirements
- Making sure individuals with physical and visual impairments can utilize the public areas
 - Minimize steep slopes
 - Improve access across streets
 - Allow for enough room for wheelchair access



WHAT IS BEING RECONSTRUCTED? - DRIVEWAYS

All existing driveway approaches to be replaced within the ROW

- All paved driveway approaches to be replaced with 6" thick concrete
- Graveled driveway approaches to be replaced with 6" thick gravel



WHAT TO EXPECT DURING CONSTRUCTION

STREET ACCESS

- You'll have access to your street but be aware of where the construction crew is, you may need to take the long way around
- Prepare for a dirty car
 - We'll try to minimize dust by spraying water when needed and installing temporary gravel surfacing on the street during rain events, so you don't get stuck

DRIVEWAY ACCESS

- Just like street access, we'll do everything we can to give you as much access to your driveway as possible
 - Contractor to coordinate with you when concrete is to be installed – you'll have to park on the street for a few days



CONSTRUCTION NOISE

- 6am to 10pm
- Contractor will likely not be working until 10pm

COMMUNICATION IS KEY!

Don't be afraid to talk to the contractor

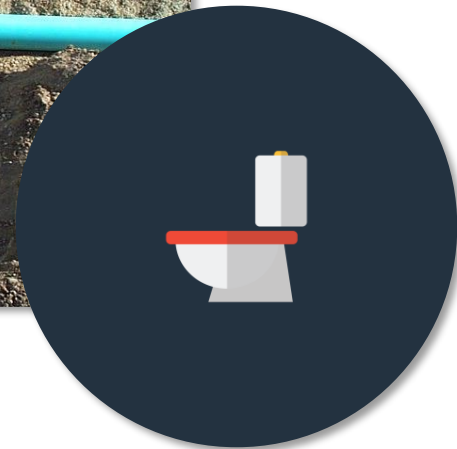
- Coordinate special access needs if needed
 - Wheelchairs, limited mobility, etc.
- If you have a doctor's appointment tomorrow and it looks like the contractor may be in the way, let the contractor know so they can ensure driveway access if needed



WHAT TO EXPECT DURING CONSTRUCTION

WATER SERVICE

- What shutoffs should be temporary
- Contractor to notify you 24hrs prior to shutoff (door hangers)
 - Water shutoffs should last only a few hours not a full day (keep in mind watermain breaks do happen)



SEWER SERVICE

- Shouldn't stop use of sanitary sewer
- Be considerate to contractor if they are working on your sewer service
 - Don't run a load of laundry or take a shower if possible

DO YOU WANT ADDITIONAL WORK ON YOUR PROPERTY?

WATER AND SEWER SERVICE

- Replacement of service line from sidewalk to the house

SURFACING

- Additional sidewalk and driveway replacement



Ask

You are more than welcome to ask the main contractor to see if they are willing to provide you a quote for the additional work

- Keep in mind the contractor has a contract and deadline with the City for the construction project. The contractor does not have to provide these additional services.
- If you plan on getting a separate contractor to perform the work, please contact and coordinate with the main contractor to see when the best time is. We want to make sure we do not make it harder on the main contractor to perform his duties.

WHAT TO EXPECT DURING CONSTRUCTION

GARBAGE DAY

- Take your garbage out to the road or alley like you normally do
- Contractor to pickup trash cans and move them outside of the project area to allow for garbage truck pickup and then will return the cans at the end of the day



MAIL

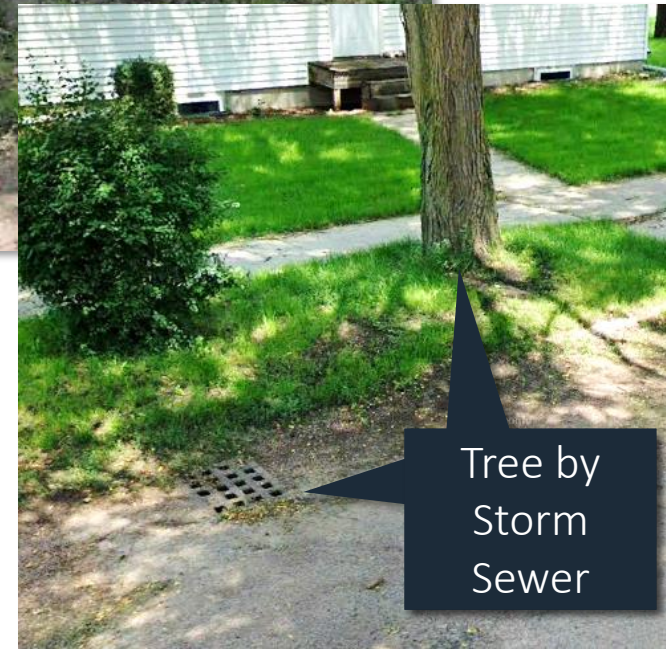
- Contractor to may need to temporarily pull your mailbox and place it outside of the construction area. All the mailboxes in the construction area will be grouped together until the end of construction for your Phase area. Contractor will then reinstall your mailbox.



WHAT TO EXPECT DURING CONSTRUCTION

TREES IN THE BOULEVARD

- All trees within the Right-of-Way are anticipated to be removed
 - Tree roots cause multiple issues
 - Start to heave and move adjacent sidewalk, driveways, and curb and gutter
 - Tree roots look for water and infiltrate storm sewers, sewer mains, and sewer services (clogging and breaks)
 - The installation of the new curb and gutter is likely to require the cutting of multiple roots of the existing tree which greatly increases the chances of the tree dying
- Large trees will be initially cut to a stump then ground down later
- Small trees and bushes can be pulled with the excavator



WHO TO CONTACT WITH ISSUES



CONTRACTOR – J&J EARTHWORKS

- **Jamie Andrews**
 - 605-432-7966

ENGINEER – BANNER ASSOCIATES

- **Paul Kraft, PE**
 - paulk@bannerassociates.com
 - 605-692-6342

CITY OF MILBANK

- **Darin Thiele – Public Works Coordinator**
 - 605-432-9575

WARRANTY PERIOD

- Contractor to warranty their work for one (1) year after completion of the project
- Prior to completion: Contractor, City, and Engineer to walk the project site to determine any final items to be fixed before warranty period begins
- One (1) year after the project has been finalized, the Contractor, City, and Engineer will go over the project area to see if any other issues are noted and require repair
 - Typically, sidewalk and driveway cracking

If you have
issues, please
let us know

THANK YOU for your time
QUESTIONS?

